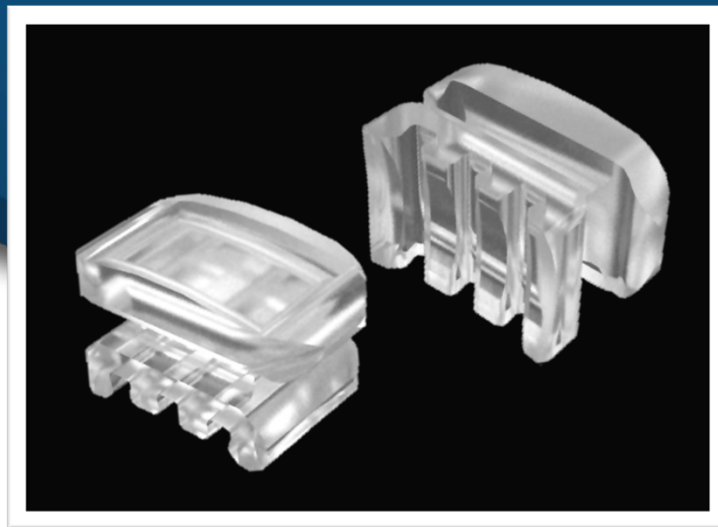


The BUTTON

Available in ceramic or high wear resistant polyurethane material, the CDB button adapts to many applications complementing many aesthetic systems. Its small size and contoured mechanical base permits optimal bonding in those hard to reach areas while its lower profile ensures patient comfort. The button also serves as an auxiliary aid to aesthetic dental aligners by providing a larger surface area for the aligner to engage with providing more predictable results. It also functions as an anchor keeping cosmetic aligners in place when elastics are required.



Features & Benefits

Aesthetics

- Tooth colored ceramic or composite materials adapt perfectly to the tooth rendering the button virtually invisible.
- Smooth, rounded surface provides exceptional patient comfort and stain resistance.

Performance

- Small size permits bonding in hard to reach areas and low profile ensures patient comfort.
- Provides a larger surface area for cosmetic aligner to engage with, ensuring treatment success.
- Serves as an auxiliary aid to keep cosmetic aligners in place when elastics are required.
- The contoured mechanical base optimizes bonding retention.

