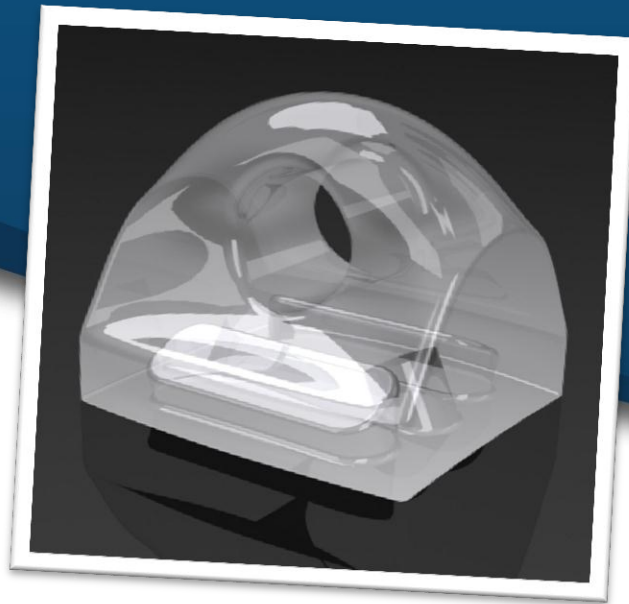


# The EYE

The Eye has been specially designed for versatility and optimal patient comfort. Created with high wear resistant polyurethane, the Eye provides a high strength bonding base with a three dimensional shape for the perfect fit in hard to reach areas. CDB's exclusive funnel entry design ensures easy wire insertion while the narrow base is optimal for quick positioning into the inter-proximal area. Its high bonding strength and clear material deliver a highly effective supporting accessory for any premium aesthetic bracket.



## Features & Benefits

### *Aesthetics*

- Crystal Clear material adapt perfectly to the to the tooth rendering the bracket virtually invisible.
- Smooth, rounded surface provides exceptional patient comfort and stain resistance.

### *Performance*

- Exclusive funnel entry design ensures easy wire insertion.
- Low profile composite for optimal patient comfort.
- Extremely high bonding strength.
- Narrow base and small size allows for easy positioning into the inter-proximal area.
- PCB free.

